

Scales

Scales should be played from memory at the specified tempo using i-m alternation (students participating in Levels 1 and 2 can choose to play scales using only the thumb).

The provided fingerings are suggestions, but you may choose to use alternate fingerings.

Scales will be graded on steadiness of tempo, fluency of LH and RH coordination, consistency of articulation, quality of tone and accuracy of shifts (when applicable).

For live auditions, all scales for the level should be prepared, and two will be selected by the jury during the audition.

For video auditions, you may record all the scales or reach out to president@bcgs.org no more than 1 month before the video deadline to receive a shortened scale assignment.

LEVEL 1

Scales (♩= 60)

G major (one octave, open position, strings ③ - ① - ③)

LEVEL 2

Scales (♩= 65)

G Major (one octave, open position, strings ③ - ① - ③)

C, D Major (one octave, open position)

LEVEL 3

Scales (♩= 71)

G, F Major (two octaves, open position)

C, D Major (one octave, open position)

Chromatic exercise (strings ③ - ① - ③), 5th position)

LEVEL 4

Scales (♩= 78)

G, F, A Major (two octaves, open position)

C, D Major (one octave, open position)

Chromatic exercise (strings ⑥ - ① - ⑥), 5th position)

LEVEL 5

Scales (♩= 86)

G, F, A, E Major (two octaves, open position)

C, D Major (one octave, open position)

Chromatic exercise (strings ⑥ - ① - ⑥, 5th position)

LEVEL 6

Scales (♩= 95)

G, F, A, E Major (two octaves, open position)

Chromatic exercise (strings ⑥ - ① - ⑥, 5th position)

G Major (two octaves, 2nd position, beginning on ⑥)

LEVEL 7

Scales (♩= 105)

Full Chromatic (strings ⑥ - ① - ⑥, open position)

G, A Major (two octaves, beginning on ⑥)

G Natural Minor (two octaves, beginning on ⑥)

LEVEL 8

Scales (♩= 116)

Full Chromatic (strings ⑥ - ① - ⑥, open position)

G, A Major (two octaves, beginning on ⑥)

G, A Natural Minor (two octaves, beginning on ⑥)

LEVEL 9

Scales (♩= 128)

Full Chromatic (strings ⑥ - ① - ⑥, open position)

G, A Major (two octaves, beginning on ⑥)

G, A Natural Minor (two octaves, beginning on ⑥)

G Harmonic Minor (two octaves, beginning on ⑥)

LEVEL 10

Scales (J= 141)

- Full Chromatic (strings ⑥ - ① - ⑥, open position)
- G, A Major (two octaves, beginning on ⑥)
- G, A Natural Minor (two octaves, beginning on ⑥)
- G, A Harmonic Minor (two octaves, beginning on ⑥)
- G Melodic Minor (two octaves, beginning on ⑥)

LEVEL 11

Scales (J= 155)

- Full Chromatic (strings ⑥ - ① - ⑥, open position)
- G Major (*three* octaves, beginning on ⑥)
- C Major (two octaves, beginning on ⑤)
- G Natural Minor (*three* octaves, beginning on ⑥)
- G, A Harmonic Minor (two octaves, beginning on ⑥)
- G, A Melodic Minor (two octaves, beginning on ⑥)

LEVEL 12

Scales (J= 170)

- Full Chromatic (strings ⑥ - ① - ⑥, open position)
- G, A Major (*three* octaves, beginning on ⑥)
- C, D Major (two octaves, beginning on ⑤)
- G, A Natural Minor (*three* octaves, beginning on ⑥)
- G, A Harmonic Minor (two octaves, beginning on ⑥)
- G, A Melodic Minor (two octaves, beginning on ⑥)

LEVEL 13

Scales (J= 186)

- Full Chromatic (strings ⑥ - ① - ⑥, open position)
- G, A, B Major (*three* octaves, beginning on ⑥)
- C, D, E Major (two octaves, beginning on ⑤)
- G, A, B Natural Minor (*three* octaves, beginning on ⑥)
- G, A, B Harmonic Minor (*three* octaves, beginning on ⑥)
- G, A, B Melodic Minor (two octaves, beginning on ⑥)

LEVEL 14

Scales (♩= 203)

- Full Chromatic (strings ⑥ - ① - ⑥, open position)
- G, A, B, E Major (*three* octaves, beginning on ⑥)
- C, D, E, F Major (two octaves, beginning on ⑤)
- G, A, B Natural Minor (*three* octaves, beginning on ⑥)
- G, A, B Harmonic Minor (*three* octaves, beginning on ⑥)
- G, A, B Melodic Minor (*three* octaves, beginning on ⑥)

LEVEL 15

Scales (♩= 220)

- Full Chromatic (strings ⑥ - ① - ⑥, open position)
- G, A, B, E Major (*three* octaves, beginning on ⑥)
- C, D, E, F Major (two octaves, beginning on ⑤)
- G, A, B, E Natural Minor (*three* octaves, beginning on ⑥)
- G, A, B, E Harmonic Minor (*three* octaves, beginning on ⑥)
- G, A, B, E Melodic Minor (*three* octaves, beginning on ⑥)

Level 1

♩ = 60

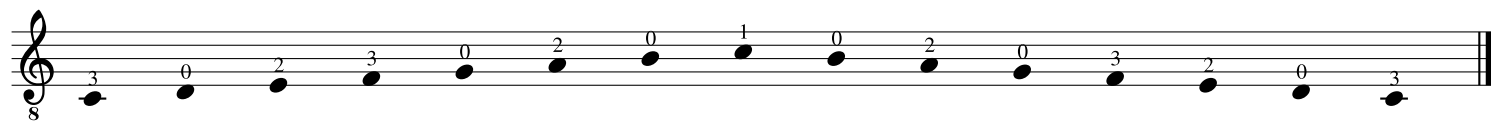
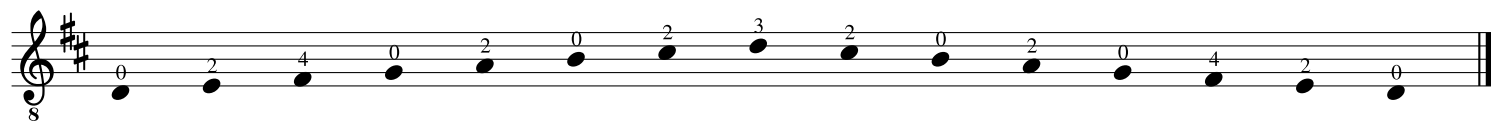
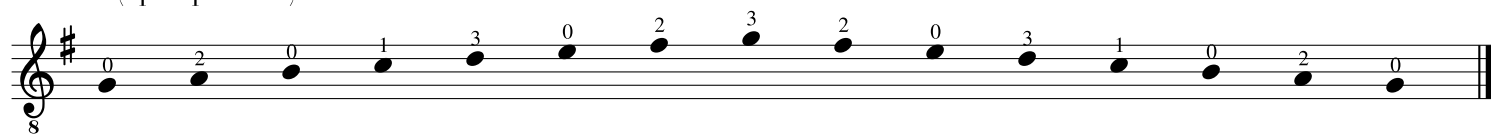
MAJOR (open position)

A musical staff in treble clef with a key signature of one sharp (F#). The staff contains a sequence of 13 notes, each with a finger number above it: 0, 2, 0, 1, 3, 0, 2, 3, 2, 0, 3, 1, 0, 2, 0. The notes are: C4 (open), D4 (2), E4 (open), F#4 (1), G4 (3), A4 (open), B4 (2), C5 (3), B4 (2), A4 (open), G4 (3), F#4 (1), E4 (open), D4 (2), C4 (open). The staff ends with a double bar line.

Level 2

♩ = 65

MAJOR (open position)



Level 3

♩ = 71

CHROMATIC

Musical notation for a chromatic exercise in D major (two sharps). The exercise is written on a single staff in treble clef with a common time signature. It consists of 16 eighth notes. The notes are: D4 (circled 3), E4 (circled 2), F#4 (circled 1), G4, A4, B4, C#5, D5, C#5, B4, A4, G4, F#4, E4, D4 (circled 3). Fingerings are indicated above the notes: 1, 2, 3, 4, 1, 2, 3, 4, 4, 3, 2, 1, 4, 3, 2, 1. The exercise is divided into four measures of four notes each.

MAJOR (open position)

Musical notation for a major exercise in D major (two sharps). The exercise is written on a single staff in treble clef with a common time signature. It consists of 16 eighth notes. The notes are: D4 (0), E4 (2), F#4 (4), G4 (0), A4 (2), B4 (0), C#5 (2), D5 (3), C#5 (2), B4 (0), A4 (2), G4 (0), F#4 (4), E4 (2), D4 (0). Fingerings are indicated above the notes: 0, 2, 4, 0, 2, 0, 2, 3, 2, 0, 2, 0, 4, 2, 0.

Musical notation for a major exercise in D major (two sharps). The exercise is written on a single staff in treble clef with a common time signature. It consists of 16 eighth notes. The notes are: D4 (3), E4 (0), F#4 (2), G4 (3), A4 (0), B4 (2), C#5 (0), D5 (1), C#5 (0), B4 (2), A4 (0), G4 (3), F#4 (2), E4 (0), D4 (3). Fingerings are indicated above the notes: 3, 0, 2, 3, 0, 2, 0, 1, 0, 2, 0, 3, 2, 0, 3.

Musical notation for a major exercise in D major (two sharps). The exercise is written on a single staff in treble clef with a common time signature. It consists of 16 eighth notes. The notes are: D4 (3), E4 (0), F#4 (2), G4 (3), A4 (0), B4 (2), C#5 (0), D5 (1), E5 (3), D5 (0), C#5 (2), B4 (3), A4 (0), G4 (3), F#4 (1), E4 (0), D4 (2). Fingerings are indicated above the notes: 3, 0, 2, 3, 0, 2, 0, 1, 3, 2, 0, 3, 1, 0, 2, 0.

Musical notation for a major exercise in D major (two sharps). The exercise is written on a single staff in treble clef with a common time signature. It consists of 16 eighth notes. The notes are: D4 (3), E4 (0), F#4 (1), G4 (3), A4 (0), B4 (1), C#5 (0), D5 (1), E5 (0), D5 (3), C#5 (1), B4 (3), A4 (2), G4 (0), F#4 (3), E4 (2), D4 (0). Fingerings are indicated above the notes: 3, 0, 1, 3, 0, 1, 0, 1, 0, 3, 1, 3, 2, 0, 3, 2.

Level 4

♩ = 78

CHROMATIC

Two staves of chromatic scale exercises in D major. The first staff shows ascending and descending patterns with fingering 1-4 and 4-1. The second staff shows more complex chromatic patterns with various fingerings.

MAJOR (open position)

Seven staves of major scale exercises in D major, focusing on open position and fingerings. The exercises include ascending and descending scales with various fingerings and patterns.

Level 5

♩ = 86

CHROMATIC

Musical staff for Chromatic exercise in D major, eighth notes. The staff shows a chromatic scale from D4 to D5. Fingering numbers 1, 2, 3, 4 are written above the notes. Circled numbers 1, 2, 3, 4, 5, 6 are written below the notes, indicating fingerings for the descending scale.

MAJOR (open position)

Musical staff for Major exercise in D major, eighth notes, open position. The staff shows a major scale from D4 to D5. Fingering numbers 0, 2, 4, 0, 2, 0, 2, 3, 2, 0, 2, 0, 4, 2, 0 are written below the notes.

Musical staff for Major exercise in D major, eighth notes. The staff shows a major scale from D4 to D5. Fingering numbers 3, 0, 2, 3, 0, 2, 0, 1, 0, 2, 0, 3, 2, 0, 3 are written below the notes.

Musical staff for Major exercise in D major, eighth notes. The staff shows a major scale from D4 to D5. Fingering numbers 3, 0, 2, 3, 0, 2, 4, 0, 2, 0, 1, 3, 0, 2, 3, 2, 0, 3, 1, 0, 2, 0, 4, 2, 0, 3, 2, 0, 3, 2, 0, 3 are written below the notes.

Musical staff for Major exercise in D major, eighth notes. The staff shows a major scale from D4 to D5. Fingering numbers 3, 0, 2, 3, 0, 2, 3, 1, 3, 0, 1, 0, 3, 1, 3, 2, 0, 3, 2, 0, 3, 1, 0, 3, 1, 0, 3 are written below the notes.

Musical staff for Major exercise in D major, eighth notes. The staff shows a major scale from D4 to D5. Fingering numbers 0, 2, 4, 0, 2, 4, 1, 3, 1, 2, 4, 1, 3, 4, 3, 1, 4, 2, 1, 3, 1, 1, 4, 2, 0, 4, 2, 0 are written below the notes.

Musical staff for Major exercise in D major, eighth notes. The staff shows a major scale from D4 to D5. Fingering numbers 0, 2, 4, 1, 2, 4, 1, 2, 0, 2, 4, 0, 4, 2, 0, 2, 1, 4, 2, 1, 4, 2, 0, 4, 2, 0 are written below the notes.

Level 6

♩ = 95

CHROMATIC

8

MAJOR (open position)

8

8

8

8

MAJOR (closed position)

8

Level 7
♩ = 105

CHROMATIC

Two staves of chromatic scale exercises. The first staff is in G major (one sharp) and the second is in G minor (no sharps or flats). Both are in 8/8 time. The first staff contains two lines of eighth notes: the first line is an ascending scale with fingerings 1-2-3-4-0-1-2-3-4-0-1-2-3-4-0-1-2-3-4, and the second line is a descending scale with fingerings 4-3-2-1-0-4-3-2-1-0-4-3-2-1-0-4-3-2-1-0. The second staff contains two lines of eighth notes: the first line is an ascending scale with fingerings 2-4-1-2-4-1-3-4-1-3-4-2-4-1-2-1-4-2-4-3-1-4-3-1-4-2-1-4-2, and the second line is a descending scale with fingerings 4-3-2-1-0-4-3-2-1-0-4-3-2-1-0-4-3-2-1-0-4-3-2-1-0-4-3-2-1-0.

MAJOR

Two staves of major scale exercises. The first staff is in G major (one sharp) and the second is in G# major (two sharps). Both are in 8/8 time. The first staff contains two lines of eighth notes: the first line is an ascending scale with fingerings 2-4-1-2-4-1-3-4-1-3-4-2-4-1-2-1-4-2-4-3-1-4-3-1-4-2-1-4-2, and the second line is a descending scale with fingerings 4-3-2-1-0-4-3-2-1-0-4-3-2-1-0-4-3-2-1-0-4-3-2-1-0-4-3-2-1-0.

MINOR (Natural)

One staff of natural minor scale exercise in G minor (no sharps or flats) in 8/8 time. It contains two lines of eighth notes: the first line is an ascending scale with fingerings 2-4-1-2-4-1-3-4-1-3-4-2-4-1-2-1-4-2-4-3-1-4-3-1-4-2-1-4-2, and the second line is a descending scale with fingerings 4-3-2-1-0-4-3-2-1-0-4-3-2-1-0-4-3-2-1-0-4-3-2-1-0-4-3-2-1-0.

Level 9
♩ = 128

CHROMATIC

Musical notation for a chromatic exercise on a single staff. The exercise consists of 28 eighth notes, each with a finger number above it. The notes are: C4 (0), C#4 (1), D4 (2), D#4 (3), E4 (4), E#4 (0), F4 (1), F#4 (2), G4 (3), G#4 (4), A4 (0), A#4 (1), B4 (2), B#4 (3), C5 (4), C#5 (0), C#5 (1), D5 (2), D5 (3), E5 (4), E5 (0), E5 (1), F5 (2), F5 (3), G5 (4), G5 (0), G5 (1), A5 (2), A5 (3), B5 (4), B5 (0), B5 (1), C6 (2), C6 (3), C6 (4). The exercise ends with a double bar line.

MAJOR

Musical notation for a major exercise on a single staff. The exercise consists of 28 eighth notes, each with a finger number above it. The notes are: C4 (2), C#4 (4), D4 (1), D#4 (2), E4 (4), E#4 (3), F4 (4), F#4 (1), G4 (3), G#4 (4), A4 (2), A#4 (4), B4 (1), B#4 (2), C5 (1), C#5 (4), D5 (2), D#5 (4), E5 (3), E#5 (1), F5 (4), F#5 (3), G5 (1), G#5 (4), A5 (2), A#5 (3), B5 (1), B#5 (4), C6 (2), C6 (4). The exercise ends with a double bar line.

Musical notation for a major exercise on a single staff. The exercise consists of 28 eighth notes, each with a finger number above it. The notes are: C4 (2), C#4 (4), D4 (1), D#4 (2), E4 (4), E#4 (3), F4 (4), F#4 (1), G4 (3), G#4 (4), A4 (2), A#4 (4), B4 (1), B#4 (2), C5 (1), C#5 (4), D5 (2), D#5 (4), E5 (3), E#5 (1), F5 (4), F#5 (3), G5 (1), G#5 (4), A5 (2), A#5 (3), B5 (1), B#5 (4), C6 (2), C6 (4). The exercise ends with a double bar line.

MINOR (Natural)

Musical notation for a minor (Natural) exercise on a single staff. The exercise consists of 28 eighth notes, each with a finger number above it. The notes are: C4 (2), C#4 (4), D4 (1), D#4 (2), E4 (4), E#4 (3), F4 (4), F#4 (1), G4 (3), G#4 (4), A4 (2), A#4 (4), B4 (1), B#4 (2), C5 (1), C#5 (4), D5 (2), D#5 (4), E5 (3), E#5 (1), F5 (4), F#5 (3), G5 (1), G#5 (4), A5 (2), A#5 (3), B5 (1), B#5 (4), C6 (2), C6 (4). The exercise ends with a double bar line.

Musical notation for a minor (Natural) exercise on a single staff. The exercise consists of 28 eighth notes, each with a finger number above it. The notes are: C4 (2), C#4 (4), D4 (1), D#4 (2), E4 (4), E#4 (3), F4 (4), F#4 (1), G4 (3), G#4 (4), A4 (2), A#4 (4), B4 (1), B#4 (2), C5 (1), C#5 (4), D5 (2), D#5 (4), E5 (3), E#5 (1), F5 (4), F#5 (3), G5 (1), G#5 (4), A5 (2), A#5 (3), B5 (1), B#5 (4), C6 (2), C6 (4). The exercise ends with a double bar line.

MINOR (Harmonic)

Musical notation for a minor (Harmonic) exercise on a single staff. The exercise consists of 28 eighth notes, each with a finger number above it. The notes are: C4 (2), C#4 (4), D4 (1), D#4 (2), E4 (4), E#4 (3), F4 (4), F#4 (1), G4 (3), G#4 (4), A4 (2), A#4 (4), B4 (1), B#4 (2), C5 (1), C#5 (4), D5 (2), D#5 (4), E5 (3), E#5 (1), F5 (4), F#5 (3), G5 (1), G#5 (4), A5 (2), A#5 (3), B5 (1), B#5 (4), C6 (2), C6 (4). The exercise ends with a double bar line.

Level 13 (cont'd)

MINOR (Natural)

Three staves of musical notation for the 'MINOR (Natural)' section. Each staff shows a sequence of notes with fingerings (1-4) and circled numbers (2-6) indicating fret positions. The first two staves are in D minor (one flat), and the third is in E minor (two sharps).

MINOR (Harmonic)

Three staves of musical notation for the 'MINOR (Harmonic)' section. Each staff shows a sequence of notes with fingerings (1-4) and circled numbers (2-6) indicating fret positions. The notes include natural and sharp signs. The first two staves are in D minor (one flat), and the third is in E minor (two sharps).

MINOR (Melodic)

Three staves of musical notation for the 'MINOR (Melodic)' section. Each staff shows a sequence of notes with fingerings (1-4) and circled numbers (2-6) indicating fret positions. The notes include natural, sharp, and flat signs. The first two staves are in D minor (one flat), and the third is in E minor (two sharps).

Level 14 (cont'd)

MINOR (Natural)

Three staves of musical notation for the 'MINOR (Natural)' section. Each staff shows a sequence of notes with fingerings (1-4) and circled numbers (2-6) indicating fret positions. The first two staves are in D minor (one flat), and the third is in E minor (two sharps).

MINOR (Harmonic)

Three staves of musical notation for the 'MINOR (Harmonic)' section. Each staff shows a sequence of notes with fingerings (1-4) and circled numbers (2-6) indicating fret positions. The first two staves are in D minor (one flat), and the third is in E minor (two sharps).

MINOR (Melodic)

Three staves of musical notation for the 'MINOR (Melodic)' section. Each staff shows a sequence of notes with fingerings (1-4) and circled numbers (2-6) indicating fret positions. The first two staves are in D minor (one flat), and the third is in E minor (two sharps).

CHROMATIC

MAJOR

MAJOR

Level 15 (cont'd)

MINOR (Natural)

Four staves of guitar notation for the 'MINOR (Natural)' exercise. Each staff shows a sequence of notes with fingerings and circled fret numbers (6, 5, 4, 3, 2). The first three staves are in natural minor (B-flat), and the fourth is in harmonic minor (B natural).

MINOR (Harmonic)

Four staves of guitar notation for the 'MINOR (Harmonic)' exercise. Each staff shows a sequence of notes with fingerings and circled fret numbers (6, 5, 4, 3, 2). The first three staves are in natural minor (B-flat), and the fourth is in harmonic minor (B natural).

Level 15 (cont'd)

MINOR (Melodic)

8

8

8

8