

Scales

Scales should be played from memory at the specified tempo using i-m alternation (students participating in Levels 1 and 2 can choose to play scales using only the thumb).

The provided fingerings are suggestions, but you may choose to use alternate fingerings.

Scales will be graded on steadiness of tempo, fluency of LH and RH coordination, consistency of articulation, quality of tone and accuracy of shifts (when applicable).

LEVEL 1

Scales (♩= 60)

G major (one octave, open position, strings ③ - ① - ③)

LEVEL 2

Scales (♩= 65)

G Major (one octave, open position, strings ③ - ① - ③)

C, D Major (one octave, open position)

LEVEL 3

Scales (♩= 71)

G, F Major (two octaves, open position)

C, D Major (one octave, open position)

Chromatic (strings ③ - ① - ③, fret V)

LEVEL 4

Scales (♩= 78)

G, F, A Major (two octaves, open position)

C, D Major (one octave, open position)

Chromatic (strings ⑥ - ① - ⑥, fret V)

LEVEL 5

Scales (♩= 86)

- G, F, A, E Major (two octaves, open position)
- C, D Major (one octave, open position)
- Chromatic (strings ⑥ - ① - ⑥, fret V)

LEVEL 6

Scales (♩= 95)

- G, F, A, E Major (two octaves, open position)
- Chromatic (strings ⑥ - ① - ⑥, fret V)
- G Major (two octaves, 2nd position, beginning on ⑥)

LEVEL 7

Scales (♩= 105)

- Full Chromatic (strings ⑥ - ① - ⑥, open position)
- G, A Major (two octaves, beginning on ⑥)
- G Natural Minor (two octaves, beginning on ⑥)

LEVEL 8

Scales (♩= 116)

- Full Chromatic (strings ⑥ - ① - ⑥, open position)
- G, A Major (two octaves, beginning on ⑥)
- G, A Natural Minor (two octaves, beginning on ⑥)

LEVEL 9

Scales (♩= 128)

- Full Chromatic (strings ⑥ - ① - ⑥, open position)
- G, A Major (two octaves, beginning on ⑥)
- G, A Natural Minor (two octaves, beginning on ⑥)
- G Harmonic Minor (two octaves, beginning on ⑥)

LEVEL 10

Scales (J= 141)

- Full Chromatic (strings ⑥ - ① - ⑥, open position)
- G, A Major (two octaves, beginning on ⑥)
- G, A Natural Minor (two octaves, beginning on ⑥)
- G, A Harmonic Minor (two octaves, beginning on ⑥)
- G Melodic Minor (two octaves, beginning on ⑥)

LEVEL 11

Scales (J= 155)

- Full Chromatic (strings ⑥ - ① - ⑥, open position)
- G Major (*three* octaves, beginning on ⑥)
- C Major (two octaves, beginning on ⑤)
- G Natural Minor (*three* octaves, beginning on ⑥)
- G, A Harmonic Minor (two octaves, beginning on ⑥)
- G, A Melodic Minor (two octaves, beginning on ⑥)

LEVEL 12

Scales (J= 170)

- Full Chromatic (strings ⑥ - ① - ⑥, open position)
- G, A Major (*three* octaves, beginning on ⑥)
- C, D Major (two octaves, beginning on ⑤)
- G, A Natural Minor (*three* octaves, beginning on ⑥)
- G, A Harmonic Minor (two octaves, beginning on ⑥)
- G, A Melodic Minor (two octaves, beginning on ⑥)

LEVEL 13

Scales (J= 186)

- Full Chromatic (strings ⑥ - ① - ⑥, open position)
- G, A, B Major (*three* octaves, beginning on ⑥)
- C, D, E Major (two octaves, beginning on ⑤)
- G, A, B Natural Minor (*three* octaves, beginning on ⑥)
- G, A, B Harmonic Minor (*three* octaves, beginning on ⑥)
- G, A, B Melodic Minor (two octaves, beginning on ⑥)

LEVEL 14

Scales (♩= 203)

- Full Chromatic (strings ⑥ - ① - ⑥, open position)
- G, A, B, E Major (*three* octaves, beginning on ⑥)
- C, D, E, F Major (two octaves, beginning on ⑤)
- G, A, B Natural Minor (*three* octaves, beginning on ⑥)
- G, A, B Harmonic Minor (*three* octaves, beginning on ⑥)
- G, A, B Melodic Minor (*three* octaves, beginning on ⑥)

LEVEL 15 (♩= 220)

Scales

- Full Chromatic (strings ⑥ - ① - ⑥, open position)
- G, A, B, E Major (*three* octaves, beginning on ⑥)
- C, D, E, F Major (two octaves, beginning on ⑤)
- G, A, B, E Natural Minor (*three* octaves, beginning on ⑥)
- G, A, B, E Harmonic Minor (*three* octaves, beginning on ⑥)
- G, A, B, E Melodic Minor (*three* octaves, beginning on ⑥)

Level 1

♩ = 60

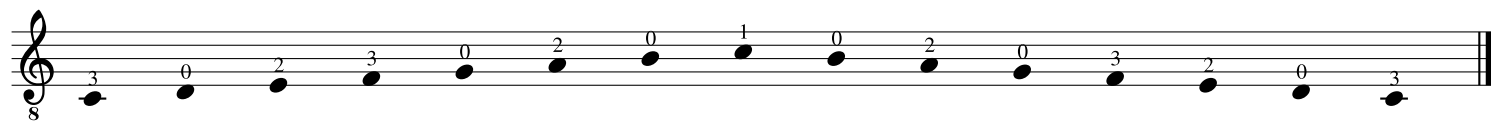
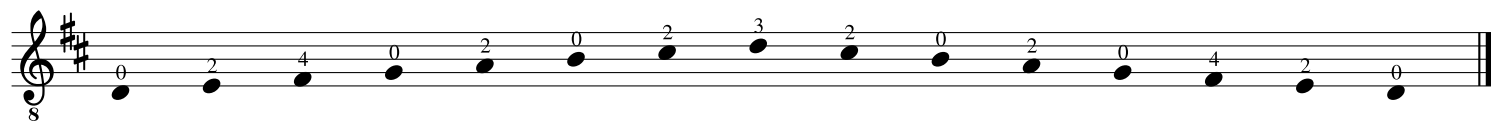
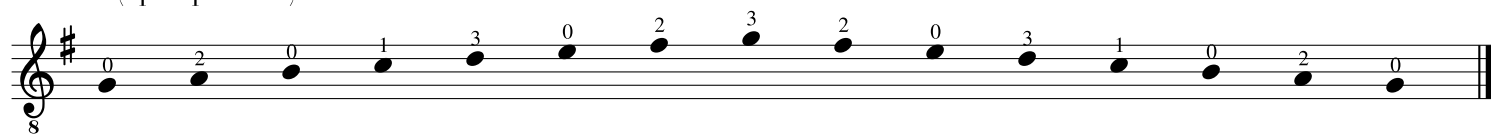
MAJOR (open position)

A musical staff in treble clef with a key signature of one sharp (F#). The staff contains a sequence of 13 notes, each with a finger number above it: 0, 2, 0, 1, 3, 0, 2, 3, 2, 0, 3, 1, 0, 2, 0. The notes are: C4 (open), D4 (2), E4 (open), F#4 (1), G4 (3), A4 (open), B4 (2), C5 (3), B4 (2), A4 (open), G4 (3), F#4 (1), E4 (open), D4 (2), C4 (open). The staff ends with a double bar line.

Level 2

♩ = 65

MAJOR (open position)



Level 3

♩ = 71

CHROMATIC

Musical notation for a chromatic exercise in D major (two sharps). The exercise is written on a single staff in treble clef with a common time signature. It consists of two measures of eighth notes. The first measure contains the notes D4, E4, F#4, G4, A4, B4, C#5, and D5. The second measure contains the notes D5, C#5, B4, A4, G4, F#4, E4, and D4. Fingerings are indicated by numbers 1-4 above the notes. Circled numbers 1, 2, and 3 are placed below the staff at the beginning of the first, second, and fourth measures respectively.

MAJOR (open position)

Musical notation for a major exercise in D major (two sharps). The exercise is written on a single staff in treble clef with a common time signature. It consists of two measures of quarter notes. The first measure contains the notes D4, E4, F#4, G4, A4, B4, C#5, and D5. The second measure contains the notes D5, C#5, B4, A4, G4, F#4, E4, and D4. Fingerings are indicated by numbers 0, 2, 4, 0, 2, 0, 2, 3, 2, 0, 2, 0, 4, 2, 0 below the notes.

Musical notation for a major exercise in D major (two sharps). The exercise is written on a single staff in treble clef with a common time signature. It consists of two measures of quarter notes. The first measure contains the notes D4, E4, F#4, G4, A4, B4, C#5, and D5. The second measure contains the notes D5, C#5, B4, A4, G4, F#4, E4, and D4. Fingerings are indicated by numbers 3, 0, 2, 3, 0, 2, 0, 1, 0, 2, 0, 3, 2, 0, 3 below the notes.

Musical notation for a major exercise in D major (two sharps). The exercise is written on a single staff in treble clef with a common time signature. It consists of two measures of quarter notes. The first measure contains the notes D4, E4, F#4, G4, A4, B4, C#5, and D5. The second measure contains the notes D5, C#5, B4, A4, G4, F#4, E4, and D4. Fingerings are indicated by numbers 3, 0, 2, 3, 0, 2, 0, 1, 3, 0, 2, 3, 2, 0, 3, 1, 0, 2, 0, 4, 2, 0, 3, 2, 0, 3 below the notes.

Musical notation for a major exercise in D major (two sharps). The exercise is written on a single staff in treble clef with a common time signature. It consists of two measures of quarter notes. The first measure contains the notes D4, E4, F#4, G4, A4, B4, C#5, and D5. The second measure contains the notes D5, C#5, B4, A4, G4, F#4, E4, and D4. Fingerings are indicated by numbers 3, 0, 1, 3, 0, 2, 3, 0, 2, 3, 1, 3, 0, 1, 0, 3, 1, 3, 2, 0, 3, 2, 0, 3, 1, 0, 3 below the notes.

Level 4

♩ = 78

CHROMATIC

Two staves of chromatic scale exercises in D major. The first staff shows ascending and descending eighth-note patterns with fingering numbers 1-4 and circled starting notes (6, 5, 4, 3, 2, 1). The second staff continues the exercise with similar patterns and fingering.

MAJOR (open position)

Seven staves of major scale exercises in D major using open position fingering. Each staff shows a different fingering pattern for the ascending and descending scales, with numbers 0-4 indicating finger placement.

Level 6

♩ = 95

CHROMATIC

8

MAJOR (open position)

8

8

8

8

MAJOR (closed position)

8

Level 8

♩ = 116

CHROMATIC

Musical notation for a chromatic exercise in G major. The staff is in treble clef with a key signature of one sharp (F#). The exercise consists of a single line of music with 28 eighth notes. The notes are: G4, A4, B4, C5, B4, A4, G4, F#4, E4, D4, C4, B3, A3, G3, F#3, E3, D3, C3, B2, A2, G2, F#2, E2, D2, C2, B1, A1, G1. Fingering numbers (0-4) are placed above the notes to indicate fingerings. The exercise ends with a double bar line.

MAJOR

Musical notation for a major exercise in G major. The staff is in treble clef with a key signature of one sharp (F#). The exercise consists of a single line of music with 28 eighth notes. The notes are: G4, A4, B4, C5, B4, A4, G4, F#4, E4, D4, C4, B3, A3, G3, F#3, E3, D3, C3, B2, A2, G2, F#2, E2, D2, C2, B1, A1, G1. Fingering numbers (0-4) are placed above the notes to indicate fingerings. The exercise ends with a double bar line.

Musical notation for a major exercise in D major. The staff is in treble clef with a key signature of two sharps (F# and C#). The exercise consists of a single line of music with 28 eighth notes. The notes are: D4, E4, F#4, G4, A4, B4, C#5, B4, A4, G4, F#4, E4, D4, C#4, B3, A3, G3, F#3, E3, D3, C#3, B2, A2, G2, F#2, E2, D2, C#1, B1, A1, G1. Fingering numbers (0-4) are placed above the notes to indicate fingerings. The exercise ends with a double bar line.

MINOR (Natural)

Musical notation for a minor (natural) exercise in G minor. The staff is in treble clef with a key signature of two flats (F and C). The exercise consists of a single line of music with 28 eighth notes. The notes are: G4, A4, B4, C5, B4, A4, G4, F4, E4, D4, C4, B3, A3, G3, F3, E3, D3, C3, B2, A2, G2, F2, E2, D2, C2, B1, A1, G1. Fingering numbers (0-4) are placed above the notes to indicate fingerings. The exercise ends with a double bar line.

Musical notation for a minor (natural) exercise in D minor. The staff is in treble clef with a key signature of two flats (F and C). The exercise consists of a single line of music with 28 eighth notes. The notes are: D4, E4, F4, G4, A4, B4, C5, B4, A4, G4, F4, E4, D4, C4, B3, A3, G3, F3, E3, D3, C4, B3, A3, G3, F3, E3, D3, C3, B2, A2, G2, F2, E2, D2, C2, B1, A1, G1. Fingering numbers (0-4) are placed above the notes to indicate fingerings. The exercise ends with a double bar line.

Level 9
♩ = 128

CHROMATIC

A single staff of music showing a chromatic scale exercise in C major. The scale starts on C4 and ascends chromatically to C5. Fingering numbers are written above each note: 0, 1, 2, 3, 4, 0, 1, 2, 3, 4, 0, 1, 2, 3, 4, 0, 1, 2, 3, 4, 0, 1, 2, 3, 4. The exercise concludes with a double bar line.

MAJOR

A single staff of music showing a major scale exercise in C major. The scale starts on C4 and ascends to C5. Fingering numbers are written above each note: 2, 4, 1, 2, 4, 1, 3, 4, 1, 3, 4, 2, 4, 1, 2, 1, 4, 2, 4, 3, 1, 4, 3, 1, 4, 2, 1, 4, 2. The exercise concludes with a double bar line.

A single staff of music showing a major scale exercise in D major. The scale starts on D4 and ascends to D5. Fingering numbers are written above each note: 2, 4, 1, 2, 4, 1, 3, 4, 1, 3, 4, 2, 4, 1, 2, 1, 4, 2, 4, 3, 1, 4, 3, 1, 4, 2, 1, 4, 2. The exercise concludes with a double bar line.

MINOR (Natural)

A single staff of music showing a natural minor scale exercise in C minor. The scale starts on C4 and ascends to C5. Fingering numbers are written above each note: 2, 4, 1, 2, 4, 1, 2, 4, 1, 2, 4, 1, 2, 4, 1, 2, 1, 4, 2, 1, 4, 2, 1, 4, 2, 1, 4, 2. The exercise concludes with a double bar line.

A single staff of music showing a natural minor scale exercise in D minor. The scale starts on D4 and ascends to D5. Fingering numbers are written above each note: 2, 4, 1, 2, 4, 1, 2, 4, 1, 2, 4, 1, 2, 4, 1, 2, 1, 4, 2, 1, 4, 2, 1, 4, 2, 1, 4, 2. The exercise concludes with a double bar line.

MINOR (Harmonic)

A single staff of music showing a harmonic minor scale exercise in C minor. The scale starts on C4 and ascends to C5. Fingering numbers are written above each note: 2, 4, 1, 2, 4, 1, 3, 4, 1, 2, 4, 2, 3, #1, 2, #1, 3, 2, 4, 2, 1, 4, #3, 1, 4, 2, 1, 4, 2. The exercise concludes with a double bar line.

Level 11

♩ = 155

CHROMATIC

MAJOR

MAJOR

MINOR (Natural)

MINOR (Harmonic)

MINOR (Melodic)

Level 12
♩ = 170

CHROMATIC

Musical notation for a chromatic exercise. It consists of two staves. The top staff is a treble clef with a key signature of one sharp (F#). The bottom staff is a bass clef with a key signature of one sharp (F#). The exercise is marked with a '6' in a circle at the beginning. The notes are: G2, F#2, E2, D2, C2, B1, A1, G1, F#1, E1, D1, C1, B0, A0, G0, F#0, E0, D0, C0, B-1, A-1, G-1, F#-1, E-1, D-1, C-1, B-2, A-2, G-2, F#-2, E-2, D-2, C-2, B-3, A-3, G-3, F#-3, E-3, D-3, C-3, B-4, A-4, G-4, F#-4, E-4, D-4, C-4, B-5, A-5, G-5, F#-5, E-5, D-5, C-5, B-6, A-6, G-6, F#-6, E-6, D-6, C-6, B-7, A-7, G-7, F#-7, E-7, D-7, C-7, B-8, A-8, G-8, F#-8, E-8, D-8, C-8, B-9, A-9, G-9, F#-9, E-9, D-9, C-9, B-10, A-10, G-10, F#-10, E-10, D-10, C-10, B-11, A-11, G-11, F#-11, E-11, D-11, C-11, B-12, A-12, G-12, F#-12, E-12, D-12, C-12, B-13, A-13, G-13, F#-13, E-13, D-13, C-13, B-14, A-14, G-14, F#-14, E-14, D-14, C-14, B-15, A-15, G-15, F#-15, E-15, D-15, C-15, B-16, A-16, G-16, F#-16, E-16, D-16, C-16, B-17, A-17, G-17, F#-17, E-17, D-17, C-17, B-18, A-18, G-18, F#-18, E-18, D-18, C-18, B-19, A-19, G-19, F#-19, E-19, D-19, C-19, B-20, A-20, G-20, F#-20, E-20, D-20, C-20, B-21, A-21, G-21, F#-21, E-21, D-21, C-21, B-22, A-22, G-22, F#-22, E-22, D-22, C-22, B-23, A-23, G-23, F#-23, E-23, D-23, C-23, B-24, A-24, G-24, F#-24, E-24, D-24, C-24, B-25, A-25, G-25, F#-25, E-25, D-25, C-25, B-26, A-26, G-26, F#-26, E-26, D-26, C-26, B-27, A-27, G-27, F#-27, E-27, D-27, C-27, B-28, A-28, G-28, F#-28, E-28, D-28, C-28, B-29, A-29, G-29, F#-29, E-29, D-29, C-29, B-30, A-30, G-30, F#-30, E-30, D-30, C-30, B-31, A-31, G-31, F#-31, E-31, D-31, C-31, B-32, A-32, G-32, F#-32, E-32, D-32, C-32, B-33, A-33, G-33, F#-33, E-33, D-33, C-33, B-34, A-34, G-34, F#-34, E-34, D-34, C-34, B-35, A-35, G-35, F#-35, E-35, D-35, C-35, B-36, A-36, G-36, F#-36, E-36, D-36, C-36, B-37, A-37, G-37, F#-37, E-37, D-37, C-37, B-38, A-38, G-38, F#-38, E-38, D-38, C-38, B-39, A-39, G-39, F#-39, E-39, D-39, C-39, B-40, A-40, G-40, F#-40, E-40, D-40, C-40, B-41, A-41, G-41, F#-41, E-41, D-41, C-41, B-42, A-42, G-42, F#-42, E-42, D-42, C-42, B-43, A-43, G-43, F#-43, E-43, D-43, C-43, B-44, A-44, G-44, F#-44, E-44, D-44, C-44, B-45, A-45, G-45, F#-45, E-45, D-45, C-45, B-46, A-46, G-46, F#-46, E-46, D-46, C-46, B-47, A-47, G-47, F#-47, E-47, D-47, C-47, B-48, A-48, G-48, F#-48, E-48, D-48, C-48, B-49, A-49, G-49, F#-49, E-49, D-49, C-49, B-50, A-50, G-50, F#-50, E-50, D-50, C-50, B-51, A-51, G-51, F#-51, E-51, D-51, C-51, B-52, A-52, G-52, F#-52, E-52, D-52, C-52, B-53, A-53, G-53, F#-53, E-53, D-53, C-53, B-54, A-54, G-54, F#-54, E-54, D-54, C-54, B-55, A-55, G-55, F#-55, E-55, D-55, C-55, B-56, A-56, G-56, F#-56, E-56, D-56, C-56, B-57, A-57, G-57, F#-57, E-57, D-57, C-57, B-58, A-58, G-58, F#-58, E-58, D-58, C-58, B-59, A-59, G-59, F#-59, E-59, D-59, C-59, B-60, A-60, G-60, F#-60, E-60, D-60, C-60, B-61, A-61, G-61, F#-61, E-61, D-61, C-61, B-62, A-62, G-62, F#-62, E-62, D-62, C-62, B-63, A-63, G-63, F#-63, E-63, D-63, C-63, B-64, A-64, G-64, F#-64, E-64, D-64, C-64, B-65, A-65, G-65, F#-65, E-65, D-65, C-65, B-66, A-66, G-66, F#-66, E-66, D-66, C-66, B-67, A-67, G-67, F#-67, E-67, D-67, C-67, B-68, A-68, G-68, F#-68, E-68, D-68, C-68, B-69, A-69, G-69, F#-69, E-69, D-69, C-69, B-70, A-70, G-70, F#-70, E-70, D-70, C-70, B-71, A-71, G-71, F#-71, E-71, D-71, C-71, B-72, A-72, G-72, F#-72, E-72, D-72, C-72, B-73, A-73, G-73, F#-73, E-73, D-73, C-73, B-74, A-74, G-74, F#-74, E-74, D-74, C-74, B-75, A-75, G-75, F#-75, E-75, D-75, C-75, B-76, A-76, G-76, F#-76, E-76, D-76, C-76, B-77, A-77, G-77, F#-77, E-77, D-77, C-77, B-78, A-78, G-78, F#-78, E-78, D-78, C-78, B-79, A-79, G-79, F#-79, E-79, D-79, C-79, B-80, A-80, G-80, F#-80, E-80, D-80, C-80, B-81, A-81, G-81, F#-81, E-81, D-81, C-81, B-82, A-82, G-82, F#-82, E-82, D-82, C-82, B-83, A-83, G-83, F#-83, E-83, D-83, C-83, B-84, A-84, G-84, F#-84, E-84, D-84, C-84, B-85, A-85, G-85, F#-85, E-85, D-85, C-85, B-86, A-86, G-86, F#-86, E-86, D-86, C-86, B-87, A-87, G-87, F#-87, E-87, D-87, C-87, B-88, A-88, G-88, F#-88, E-88, D-88, C-88, B-89, A-89, G-89, F#-89, E-89, D-89, C-89, B-90, A-90, G-90, F#-90, E-90, D-90, C-90, B-91, A-91, G-91, F#-91, E-91, D-91, C-91, B-92, A-92, G-92, F#-92, E-92, D-92, C-92, B-93, A-93, G-93, F#-93, E-93, D-93, C-93, B-94, A-94, G-94, F#-94, E-94, D-94, C-94, B-95, A-95, G-95, F#-95, E-95, D-95, C-95, B-96, A-96, G-96, F#-96, E-96, D-96, C-96, B-97, A-97, G-97, F#-97, E-97, D-97, C-97, B-98, A-98, G-98, F#-98, E-98, D-98, C-98, B-99, A-99, G-99, F#-99, E-99, D-99, C-99, B-100, A-100, G-100, F#-100, E-100, D-100, C-100, B-101, A-101, G-101, F#-101, E-101, D-101, C-101, B-102, A-102, G-102, F#-102, E-102, D-102, C-102, B-103, A-103, G-103, F#-103, E-103, D-103, C-103, B-104, A-104, G-104, F#-104, E-104, D-104, C-104, B-105, A-105, G-105, F#-105, E-105, D-105, C-105, B-106, A-106, G-106, F#-106, E-106, D-106, C-106, B-107, A-107, G-107, F#-107, E-107, D-107, C-107, B-108, A-108, G-108, F#-108, E-108, D-108, C-108, B-109, A-109, G-109, F#-109, E-109, D-109, C-109, B-110, A-110, G-110, F#-110, E-110, D-110, C-110, B-111, A-111, G-111, F#-111, E-111, D-111, C-111, B-112, A-112, G-112, F#-112, E-112, D-112, C-112, B-113, A-113, G-113, F#-113, E-113, D-113, C-113, B-114, A-114, G-114, F#-114, E-114, D-114, C-114, B-115, A-115, G-115, F#-115, E-115, D-115, C-115, B-116, A-116, G-116, F#-116, E-116, D-116, C-116, B-117, A-117, G-117, F#-117, E-117, D-117, C-117, B-118, A-118, G-118, F#-118, E-118, D-118, C-118, B-119, A-119, G-119, F#-119, E-119, D-119, C-119, B-120, A-120, G-120, F#-120, E-120, D-120, C-120, B-121, A-121, G-121, F#-121, E-121, D-121, C-121, B-122, A-122, G-122, F#-122, E-122, D-122, C-122, B-123, A-123, G-123, F#-123, E-123, D-123, C-123, B-124, A-124, G-124, F#-124, E-124, D-124, C-124, B-125, A-125, G-125, F#-125, E-125, D-125, C-125, B-126, A-126, G-126, F#-126, E-126, D-126, C-126, B-127, A-127, G-127, F#-127, E-127, D-127, C-127, B-128, A-128, G-128, F#-128, E-128, D-128, C-128, B-129, A-129, G-129, F#-129, E-129, D-129, C-129, B-130, A-130, G-130, F#-130, E-130, D-130, C-130, B-131, A-131, G-131, F#-131, E-131, D-131, C-131, B-132, A-132, G-132, F#-132, E-132, D-132, C-132, B-133, A-133, G-133, F#-133, E-133, D-133, C-133, B-134, A-134, G-134, F#-134, E-134, D-134, C-134, B-135, A-135, G-135, F#-135, E-135, D-135, C-135, B-136, A-136, G-136, F#-136, E-136, D-136, C-136, B-137, A-137, G-137, F#-137, E-137, D-137, C-137, B-138, A-138, G-138, F#-138, E-138, D-138, C-138, B-139, A-139, G-139, F#-139, E-139, D-139, C-139, B-140, A-140, G-140, F#-140, E-140, D-140, C-140, B-141, A-141, G-141, F#-141, E-141, D-141, C-141, B-142, A-142, G-142, F#-142, E-142, D-142, C-142, B-143, A-143, G-143, F#-143, E-143, D-143, C-143, B-144, A-144, G-144, F#-144, E-144, D-144, C-144, B-145, A-145, G-145, F#-145, E-145, D-145, C-145, B-146, A-146, G-146, F#-146, E-146, D-146, C-146, B-147, A-147, G-147, F#-147, E-147, D-147, C-147, B-148, A-148, G-148, F#-148, E-148, D-148, C-148, B-149, A-149, G-149, F#-149, E-149, D-149, C-149, B-150, A-150, G-150, F#-150, E-150, D-150, C-150, B-151, A-151, G-151, F#-151, E-151, D-151, C-151, B-152, A-152, G-152, F#-152, E-152, D-152, C-152, B-153, A-153, G-153, F#-153, E-153, D-153, C-153, B-154, A-154, G-154, F#-154, E-154, D-154, C-154, B-155, A-155, G-155, F#-155, E-155, D-155, C-155, B-156, A-156, G-156, F#-156, E-156, D-156, C-156, B-157, A-157, G-157, F#-157, E-157, D-157, C-157, B-158, A-158, G-158, F#-158, E-158, D-158, C-158, B-159, A-159, G-159, F#-159, E-159, D-159, C-159, B-160, A-160, G-160, F#-160, E-160, D-160, C-160, B-161, A-161, G-161, F#-161, E-161, D-161, C-161, B-162, A-162, G-162, F#-162, E-162, D-162, C-162, B-163, A-163, G-163, F#-163, E-163, D-163, C-163, B-164, A-164, G-164, F#-164, E-164, D-164, C-164, B-165, A-165, G-165, F#-165, E-165, D-165, C-165, B-166, A-166, G-166, F#-166, E-166, D-166, C-166, B-167, A-167, G-167, F#-167, E-167, D-167, C-167, B-168, A-168, G-168, F#-168, E-168, D-168, C-168, B-169, A-169, G-169, F#-169, E-169, D-169, C-169, B-170, A-170, G-170, F#-170, E-170, D-170, C-170, B-171, A-171, G-171, F#-171, E-171, D-171, C-171, B-172, A-172, G-172, F#-172, E-172, D-172, C-172, B-173, A-173, G-173, F#-173, E-173, D-173, C-173, B-174, A-174, G-174, F#-174, E-174, D-174, C-174, B-175, A-175, G-175, F#-175, E-175, D-175, C-175, B-176, A-176, G-176, F#-176, E-176, D-176, C-176, B-177, A-177, G-177, F#-177, E-177, D-177, C-177, B-178, A-178, G-178, F#-178, E-178, D-178, C-178, B-179, A-179, G-179, F#-179, E-179, D-179, C-179, B-180, A-180, G-180, F#-180, E-180, D-180, C-180, B-181, A-181, G-181, F#-181, E-181, D-181, C-181, B-182, A-182, G-182, F#-182, E-182, D-182, C-182, B-183, A-183, G-183, F#-183, E-183, D-183, C-183, B-184, A-184, G-184, F#-184, E-184, D-184, C-184, B-185, A-185, G-185, F#-185, E-185, D-185, C-185, B-186, A-186, G-186, F#-186, E-186, D-186, C-186, B-187, A-187, G-187, F#-187, E-187, D-187, C-187, B-188, A-188, G-188, F#-188, E-188, D-188, C-188, B-189, A-189, G-189, F#-189, E-189, D-189, C-189, B-190, A-190, G-190, F#-190, E-190, D-190, C-190, B-191, A-191, G-191, F#-191, E-191, D-191, C-191, B-192, A-192, G-192, F#-192, E-192, D-192, C-192, B-193, A-193, G-193, F#-193, E-193, D-193, C-193, B-194, A-194, G-194, F#-194, E-194, D-194, C-194, B-195, A-195, G-195, F#-195, E-195, D-195, C-195, B-196, A-196, G-196, F#-196, E-196, D-196, C-196, B-197, A-197, G-197, F#-197, E-197, D-197, C-197, B-198, A-198, G-198, F#-198, E-198, D-198, C-198, B-199, A-199, G-199, F#-199, E-199, D-199, C-199, B-200, A-200, G-200, F#-200, E-200, D-200, C-200, B-201, A-201, G-201, F#-201, E-201, D-201, C-201, B-202, A-202, G-202, F#-202, E-202, D-202, C-202, B-203, A-203, G-203, F#-203, E-203, D-203, C-203, B-204, A-204, G-204, F#-204, E-204, D-204, C-204, B-205, A-205, G-205, F#-205, E-205, D-205, C-205, B-206, A-206, G-206, F#-206, E-206, D-206, C-206, B-207, A-207, G-207, F#-207, E-207, D-207, C-207, B-208, A-208, G-208, F#-208, E-208, D-208, C-208, B-209, A-209, G-209, F#-209, E-209, D-209, C-209, B-210, A-210, G-210, F#-210, E-210, D-210, C-210, B-211, A-211, G-211, F#-211, E-211, D-211, C-211, B-212, A-212, G-212, F#-212, E-212, D-212, C-212, B-213, A-213, G-213, F#-213, E-213, D-213, C-213, B-214, A-214, G-214, F#-214, E-214, D-214, C-214, B-215, A-215, G-215, F#-215, E-215, D-215, C-215, B-216, A-216, G-216, F#-216, E-216, D-216, C-216, B-217, A-217, G-217, F#-217, E-217, D-217, C-217, B-218, A-218, G-218, F#-218, E-218, D-218, C-218, B-219, A-219, G-219, F#-219, E-219, D-219, C-219, B-220, A-220, G-220, F#-220, E-220, D-220, C-220, B-221, A-221, G-221, F#-221, E-221, D-221, C-221, B-222, A-222, G-222, F#-222, E-222, D-222, C-222, B-223, A-223, G-223, F#-223, E-223, D-223, C-223, B-224, A-224, G-224, F#-224, E-224, D-224, C-224, B-225, A-225, G-225, F#-225, E-225, D-225, C-225, B-226, A-226, G-226, F#-226, E-226, D-226, C-226, B-227, A-227, G-227, F#-227, E-227, D-227, C-227, B-228, A-228, G-228, F#-228, E-228, D-228, C-228, B-229, A-229, G-229, F#-229, E-229, D-229, C-229, B-230, A-230, G-230, F#-230, E-230, D-230, C-230, B-231, A-231, G-231, F#-231, E-231, D-231, C-231, B-232, A-232, G-232, F#-232, E-232, D-232, C-232, B-233, A-233, G-233, F#-233, E-233, D-233, C-233, B-234, A-234, G-234, F#-234, E-234, D-234, C-234, B-235, A-235, G-235, F#-235, E-235, D-235, C-235, B-236, A-236, G-236, F#-236, E-236, D-236, C-236, B-237, A-237, G-237, F#-237, E-237, D-237, C-237, B-238, A-238, G-238, F#-238, E-238, D-238, C-238, B-239, A-239, G-239, F#-239, E-239, D-239, C-239, B-240, A-240, G-240, F#-240, E-240, D-240, C-240, B-241, A-241, G-241, F#-241, E-241, D-241, C-241, B-242, A-242, G-242, F#-242, E-242, D-242, C-242, B-243, A-243, G-243, F#-243, E-243, D-243, C-243, B-244, A-244, G-244, F#-244, E-244, D-244, C-244, B-245, A-245, G-245, F#-245, E-245, D-245, C-245, B-246, A-246, G-246, F#-246, E-246, D-246, C-246, B-247, A-247, G-247, F#-247, E-247, D-247, C-247, B-248, A-248, G-248, F#-248, E-248, D-248, C-248, B-249, A-249, G-249, F#-249, E-249, D-249, C-249, B-250, A-250, G-250, F#-250, E-250, D-250, C-250, B-251, A-251, G-251, F#-251, E-251, D-251, C-251, B-252, A-252, G-252, F#-252, E-252, D-252, C-252, B-253, A-253, G-253, F#-253, E-253, D-253, C-253, B-254, A-254, G-254, F#-254, E-254, D-254, C-254, B-255, A-255, G-255, F#-255, E-255, D-255, C-255, B-256, A-256, G-256, F#-256, E-256, D-256, C-256, B-257, A-257, G-257, F#-257, E-257, D-257, C-257, B-258, A-258, G-258, F#-258, E-258, D-258, C-258, B-259, A-259, G-259, F#-259, E-259, D-259, C-259, B-260, A-260, G-260, F#-260, E-260, D-260, C-260, B-261, A-261, G-261, F#-261, E-261, D-261, C-261, B-262, A-262, G-262, F#-262, E-262, D-262, C-262, B-263, A-263, G-263, F#-263, E-263, D-263, C-263, B-264, A-264, G-264, F#-264, E-264, D-264, C-264, B-265, A-265, G-265, F#-265, E-265, D-265, C-265, B-266, A-266, G-266, F#-266, E-266, D-266, C-266, B-267, A-267, G-267, F#-267, E-267, D-267, C-267, B-268, A-268, G-268, F#-268, E-268, D-268, C-268, B-269, A-269, G-269, F#-269, E-269, D-269, C-269, B-270, A-270, G-270, F#-270, E-270, D-270, C-270, B-271, A-271, G-271, F#-271, E-271, D-271, C-271, B-272, A-272, G-272, F#-272, E-272, D-272, C-272, B-273, A-273, G-273, F#-273, E-273, D-273, C-273, B-274, A-274, G-274, F#-274, E-274, D-274, C-274, B-275, A-275, G-275, F#-275, E-275, D-275, C-275, B-276, A-276, G-276, F#-276, E-276, D-276, C-276, B-277, A-277, G-277, F#-277, E-277, D-277, C-277, B-278, A-278, G-278, F#-278, E-278, D-278, C-278, B-279, A-279, G-279, F#-279, E-279, D-279, C-279, B-280, A-280, G-280, F#-280, E-280, D-280, C-280, B-281, A-281, G-281, F#-281, E-281, D-281, C-281, B-282, A-282, G-282, F#-282, E-282, D-282, C-282, B-283, A-283, G-283, F#-283, E-283, D-283, C-283, B-284, A-284, G-284, F#-284, E-284, D-284, C-284, B-285, A-285, G-285, F#-285, E-285, D-285, C-285, B-286, A-286, G-286, F#-286, E-286, D-286, C-286, B-287, A-287, G-287, F#-287, E-287, D-287, C-287, B-288, A-288, G-288, F#-288, E-288, D-288, C-288, B-289, A-289, G-289, F#-289, E-289, D-289, C-289, B-290, A-290, G-290, F#-290, E-290, D-290, C-290, B-291, A-291, G-291, F#-291, E-291, D-291, C-291, B-292, A-292, G-292, F#-292, E-292, D-292, C-292, B-293, A-293, G-293, F#-293, E-293, D-293, C-293, B-294, A-294, G-294, F#-294, E-294, D-294, C-294, B-295, A-295, G-295, F#-295, E-295, D-295, C-295, B-296, A-296, G-296, F#-296, E-296, D-296, C-296, B-297, A-297, G-297, F#-297, E-297, D-297, C-297, B-298, A-298, G-298, F#-298, E-298, D-298, C-298, B-299, A-299, G-299, F#-299, E-299, D-299, C-299, B-300, A-300, G-300, F#-300,

Level 12 (cont'd)

MINOR (Natural)

First staff of the MINOR (Natural) section. It features a treble clef, a key signature of one flat (B-flat), and a common time signature. The exercise consists of a single melodic line with various fingering numbers (1-4) and slurs. Circled numbers 3, 4, 5, and 6 are placed below the staff, likely indicating fret positions or specific notes.

Second staff of the MINOR (Natural) section. It features a treble clef, a key signature of one flat (B-flat), and a common time signature. The exercise consists of a single melodic line with various fingering numbers (1-4) and slurs. Circled numbers 3, 4, 5, and 6 are placed below the staff, likely indicating fret positions or specific notes.

MINOR (Harmonic)

First staff of the MINOR (Harmonic) section. It features a treble clef, a key signature of one flat (B-flat), and a common time signature. The exercise consists of a single melodic line with various fingering numbers (1-4) and slurs. Circled numbers 3, 4, 5, and 6 are placed below the staff, likely indicating fret positions or specific notes.

Second staff of the MINOR (Harmonic) section. It features a treble clef, a key signature of one flat (B-flat), and a common time signature. The exercise consists of a single melodic line with various fingering numbers (1-4) and slurs. Circled numbers 3, 4, 5, and 6 are placed below the staff, likely indicating fret positions or specific notes.

MINOR (Melodic)

First staff of the MINOR (Melodic) section. It features a treble clef, a key signature of one flat (B-flat), and a common time signature. The exercise consists of a single melodic line with various fingering numbers (1-4) and slurs. Circled numbers 3, 4, 5, and 6 are placed below the staff, likely indicating fret positions or specific notes.

Second staff of the MINOR (Melodic) section. It features a treble clef, a key signature of one flat (B-flat), and a common time signature. The exercise consists of a single melodic line with various fingering numbers (1-4) and slurs. Circled numbers 3, 4, 5, and 6 are placed below the staff, likely indicating fret positions or specific notes.

Level 13

♩ = 186

CHROMATIC

A single staff of music in treble clef with a key signature of one flat (Bb). The exercise consists of a continuous chromatic scale starting on G4 and ending on G5. The notes are: G4, Ab4, A4, Bb4, B4, C5, C#5, D5, Eb5, E5, F5, F#5, G5. Fingerings are indicated by numbers 1-4 above the notes. A circled '8' is at the beginning of the staff.

MAJOR

A single staff of music in treble clef with a key signature of one sharp (F#). The exercise consists of a major scale starting on G4 and ending on G5. The notes are: G4, A4, B4, C5, D5, E5, F#5, G5. Fingerings are indicated by numbers 1-4 above the notes. A circled '8' is at the beginning of the staff.

A single staff of music in treble clef with a key signature of two sharps (F#, C#). The exercise consists of a major scale starting on G4 and ending on G5. The notes are: G4, A4, B4, C5, D5, E5, F#5, G5. Fingerings are indicated by numbers 1-4 above the notes. A circled '8' is at the beginning of the staff.

A single staff of music in treble clef with a key signature of three sharps (F#, C#, G#). The exercise consists of a major scale starting on G4 and ending on G5. The notes are: G4, A4, B4, C5, D5, E5, F#5, G5. Fingerings are indicated by numbers 1-4 above the notes. A circled '8' is at the beginning of the staff.

MAJOR

A single staff of music in treble clef with a key signature of one sharp (F#). The exercise consists of a major scale starting on G4 and ending on G5. The notes are: G4, A4, B4, C5, D5, E5, F#5, G5. Fingerings are indicated by numbers 1-4 above the notes. A circled '8' is at the beginning of the staff.

A single staff of music in treble clef with a key signature of two sharps (F#, C#). The exercise consists of a major scale starting on G4 and ending on G5. The notes are: G4, A4, B4, C5, D5, E5, F#5, G5. Fingerings are indicated by numbers 1-4 above the notes. A circled '8' is at the beginning of the staff.

A single staff of music in treble clef with a key signature of three sharps (F#, C#, G#). The exercise consists of a major scale starting on G4 and ending on G5. The notes are: G4, A4, B4, C5, D5, E5, F#5, G5. Fingerings are indicated by numbers 1-4 above the notes. A circled '8' is at the beginning of the staff.

Level 13 (cont'd)

MINOR (Natural)

Three staves of musical notation for the 'MINOR (Natural)' section. Each staff shows a sequence of notes with fingerings (1-4) and circled numbers (2-6) indicating fret positions. The first two staves are in D minor (one flat), and the third is in E minor (two sharps).

MINOR (Harmonic)

Three staves of musical notation for the 'MINOR (Harmonic)' section. Each staff shows a sequence of notes with fingerings (1-4) and circled numbers (2-6) indicating fret positions. The first two staves are in D minor (one flat), and the third is in E minor (two sharps).

MINOR (Melodic)

Three staves of musical notation for the 'MINOR (Melodic)' section. Each staff shows a sequence of notes with fingerings (1-4) and circled numbers (2-6) indicating fret positions. The first two staves are in D minor (one flat), and the third is in E minor (two sharps).

Level 14 (cont'd)

MINOR (Natural)

Three staves of musical notation for the 'MINOR (Natural)' section. Each staff shows a sequence of notes with fingerings (1-4) and circled numbers (2-6) indicating fret positions. The first two staves are in D minor (one flat), and the third is in E minor (two sharps).

MINOR (Harmonic)

Three staves of musical notation for the 'MINOR (Harmonic)' section. Each staff shows a sequence of notes with fingerings (1-4) and circled numbers (2-6) indicating fret positions. The first two staves are in D minor (one flat), and the third is in E minor (two sharps).

MINOR (Melodic)

Three staves of musical notation for the 'MINOR (Melodic)' section. Each staff shows a sequence of notes with fingerings (1-4) and circled numbers (2-6) indicating fret positions. The first two staves are in D minor (one flat), and the third is in E minor (two sharps).

Level 15 (cont'd)

MINOR (Natural)

Four musical staves for 'MINOR (Natural)' in different keys: B-flat, B-natural, C, and D major. Each staff contains a sequence of notes with fingerings (1-4) and circled fret numbers (2-6) indicating the fret position for each note. The notes are arranged in a scale-like pattern across the staves.

MINOR (Harmonic)

Four musical staves for 'MINOR (Harmonic)' in different keys: B-flat, B-natural, C, and D major. Each staff contains a sequence of notes with fingerings (1-4) and circled fret numbers (1-6) indicating the fret position for each note. The notes are arranged in a scale-like pattern across the staves.

Level 15 (cont'd)

MINOR (Melodic)

8

8

8

8